

XX Congresso Nazionale delle Malattie Digestive

IV  
EDIZIONE

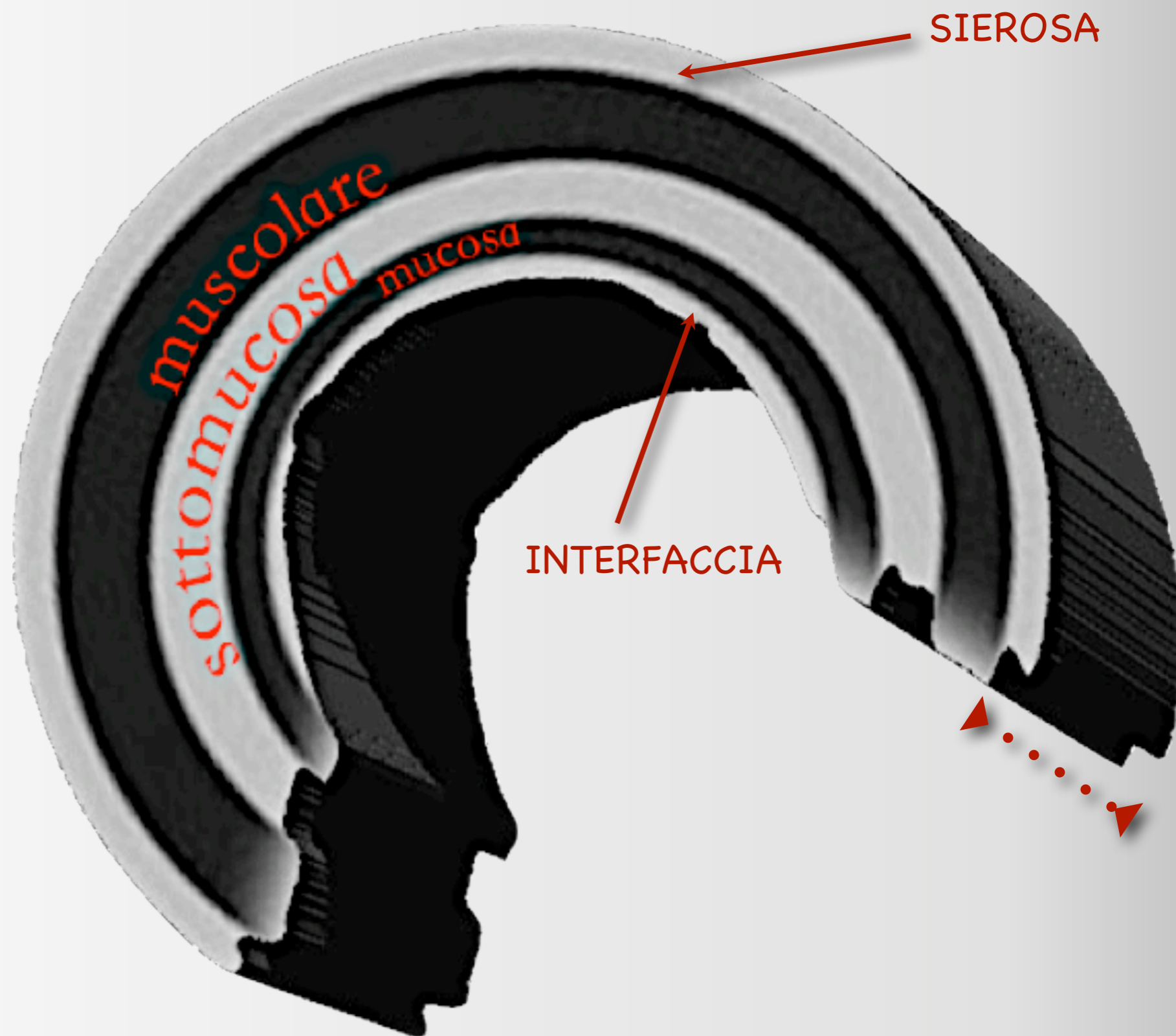
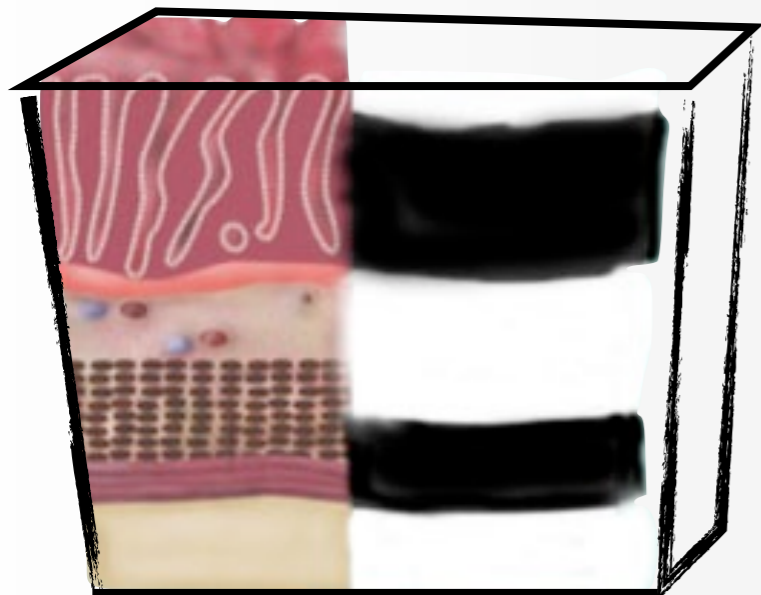
# LEARNING CORNER

*Commissione Giovani e Commissione Endoscopia*



EUS di STOMACO & DUODENO





Ispessimento parietale

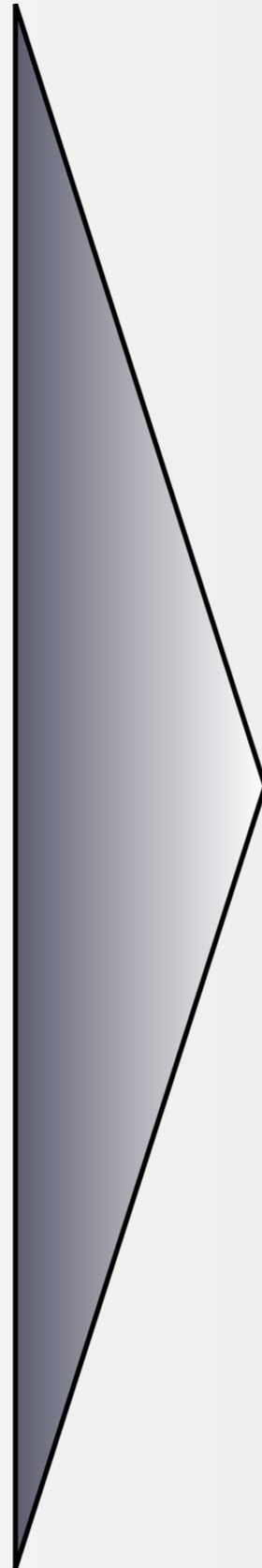
Stratificazione parete

Elasticità

organi/tessuti circostanti

linfonodi

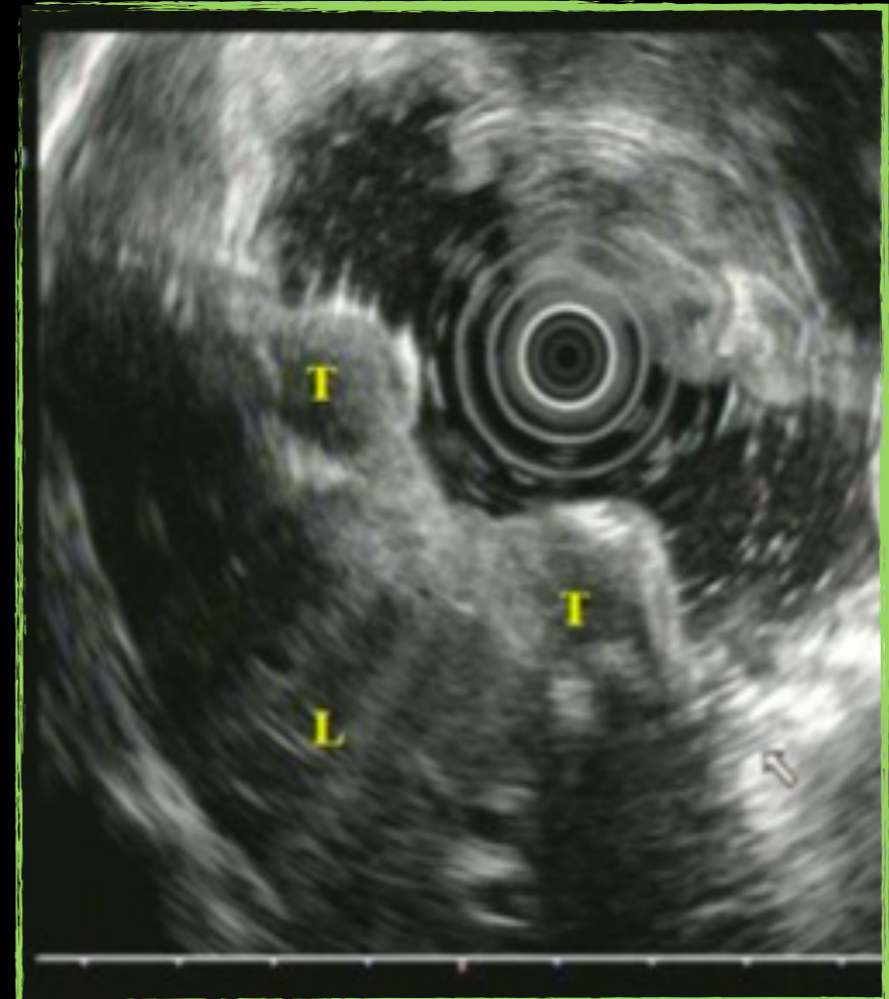
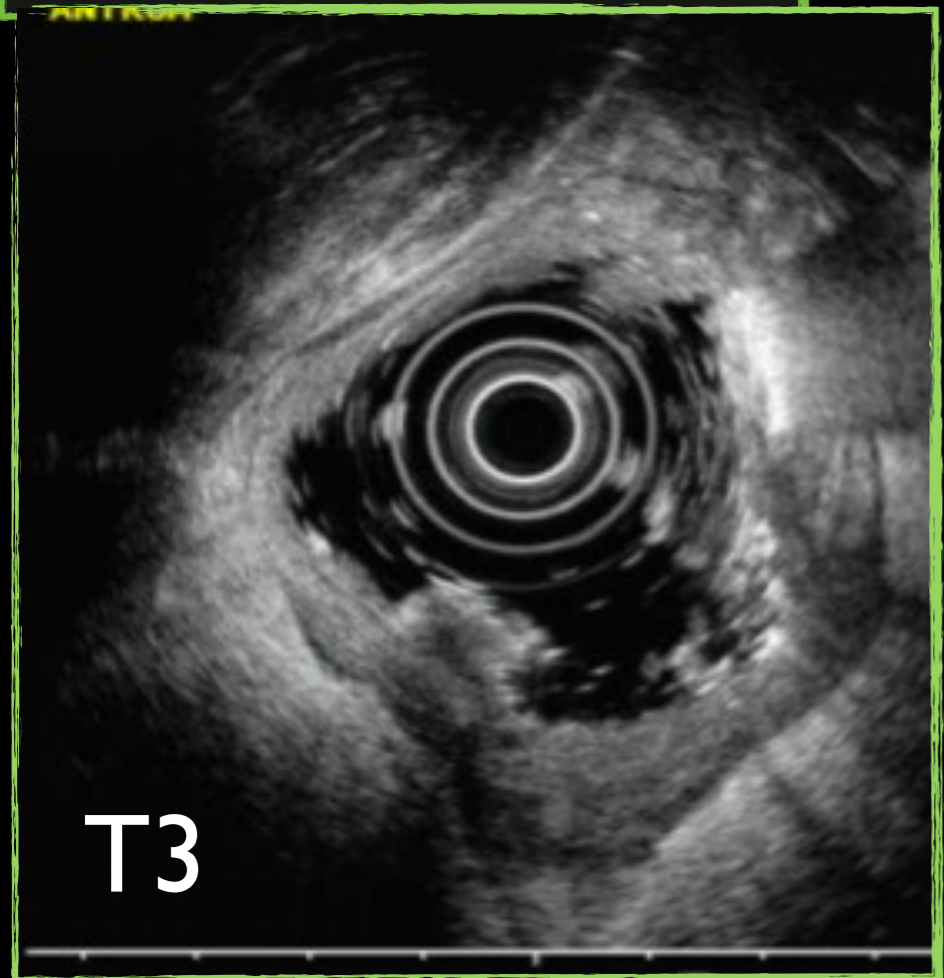
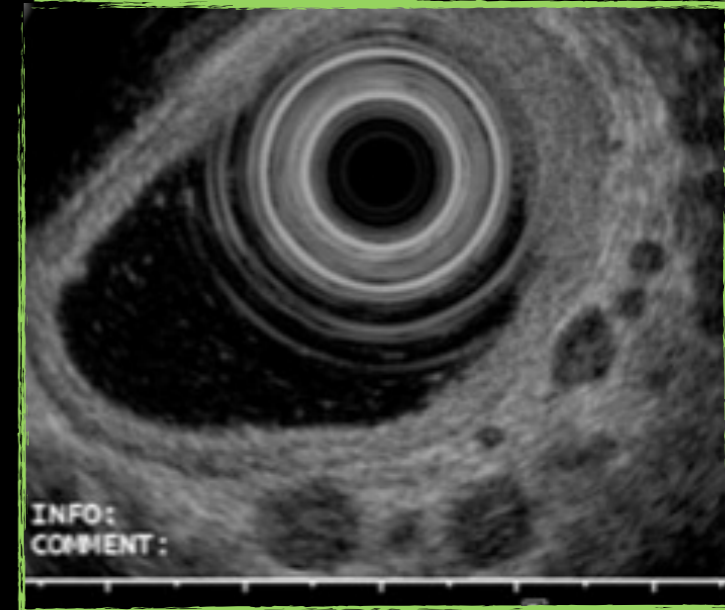
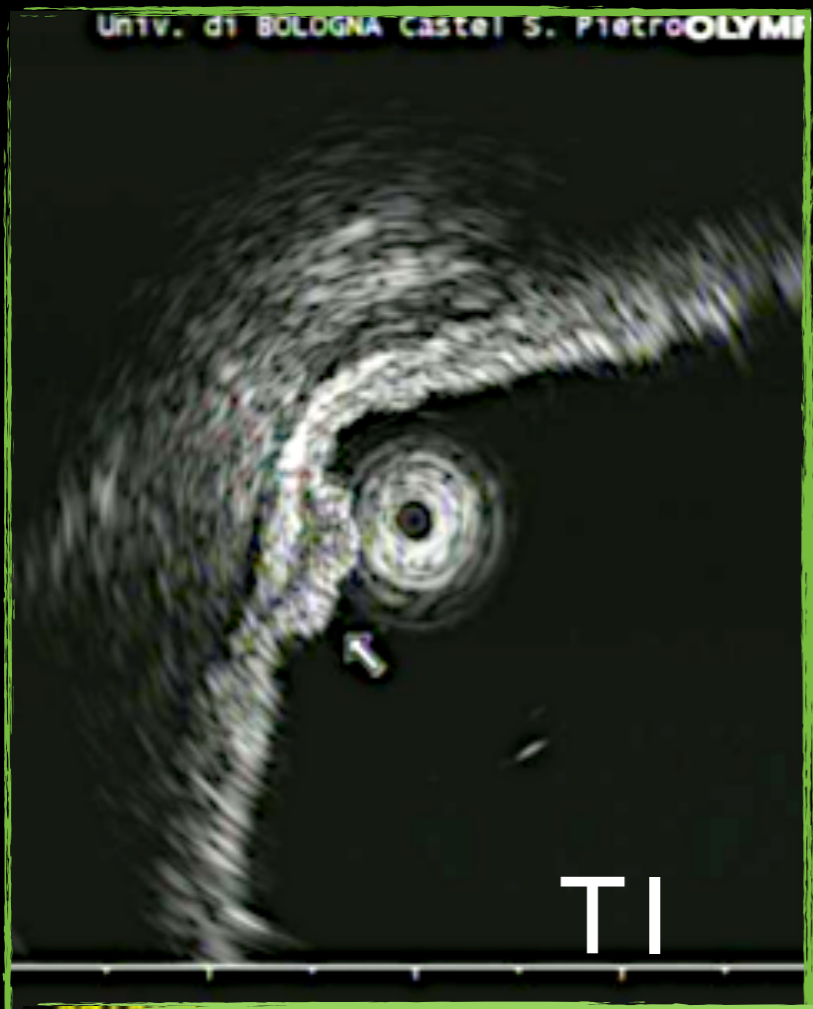
lesioni circoscritte



**DIAGNOSI  
STADIAZIONE**

**LESIONE FOCALE  
LINITE  
LINFOMA  
LESIONI SOTTOMUCOSE**

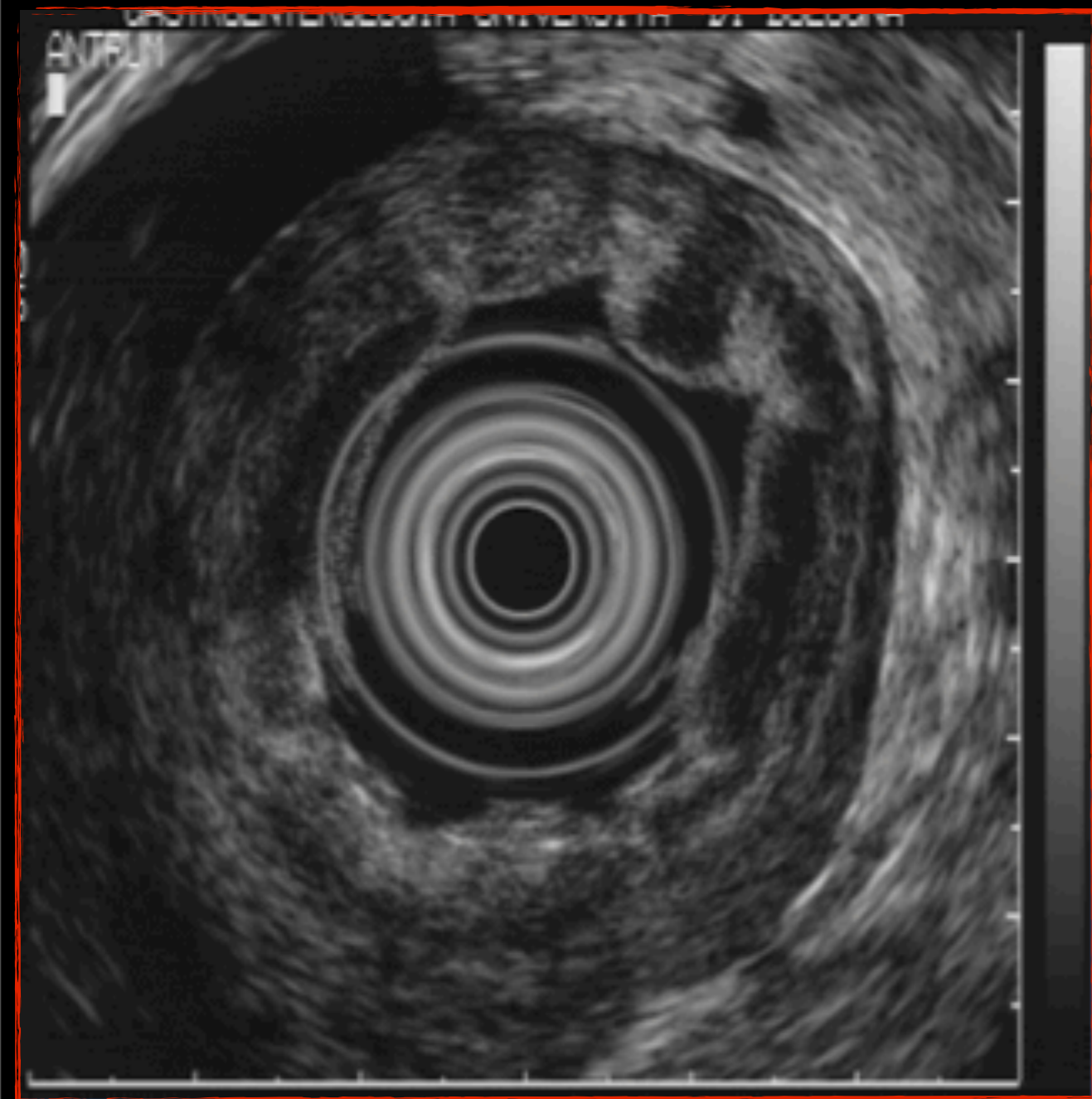




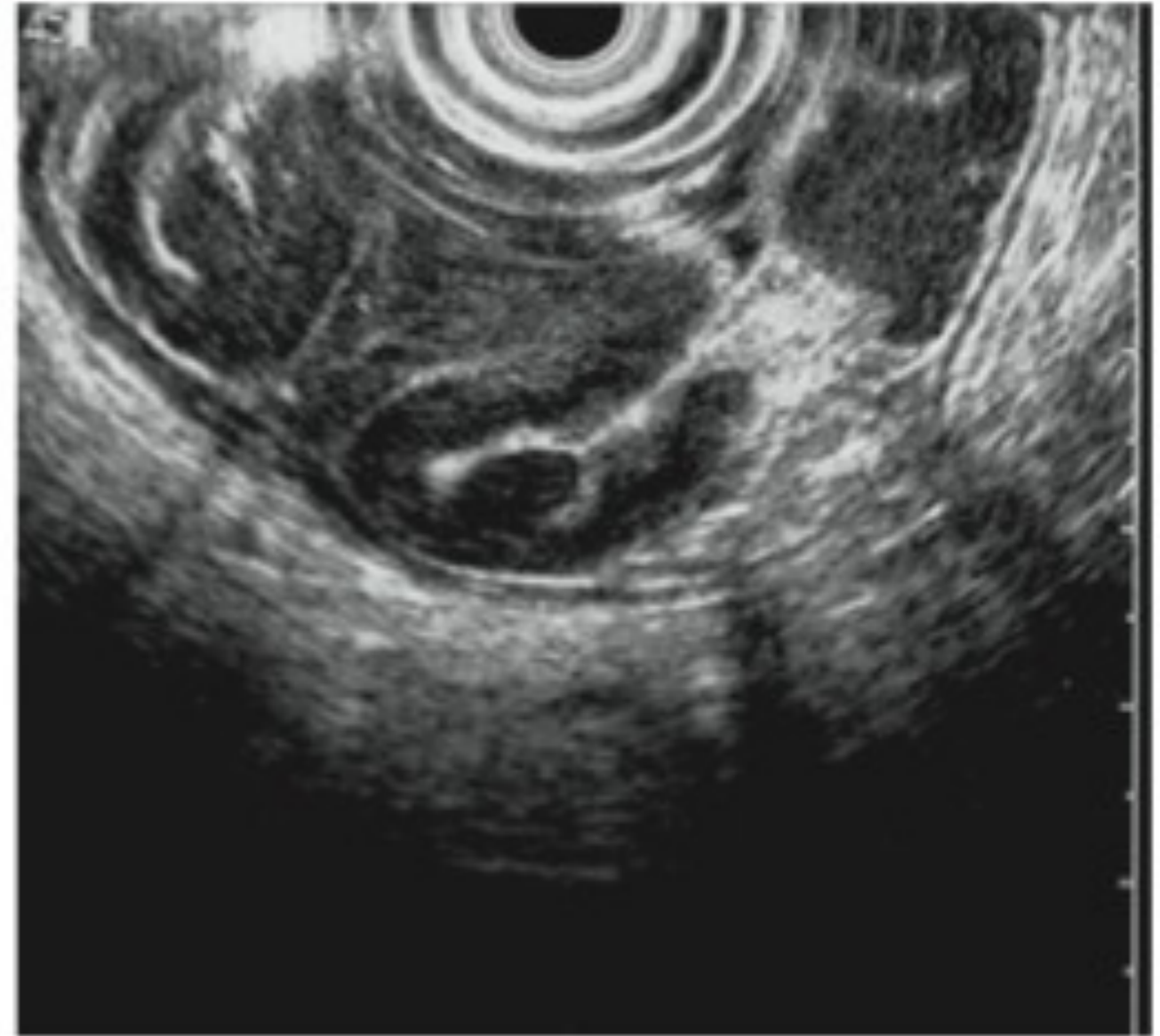
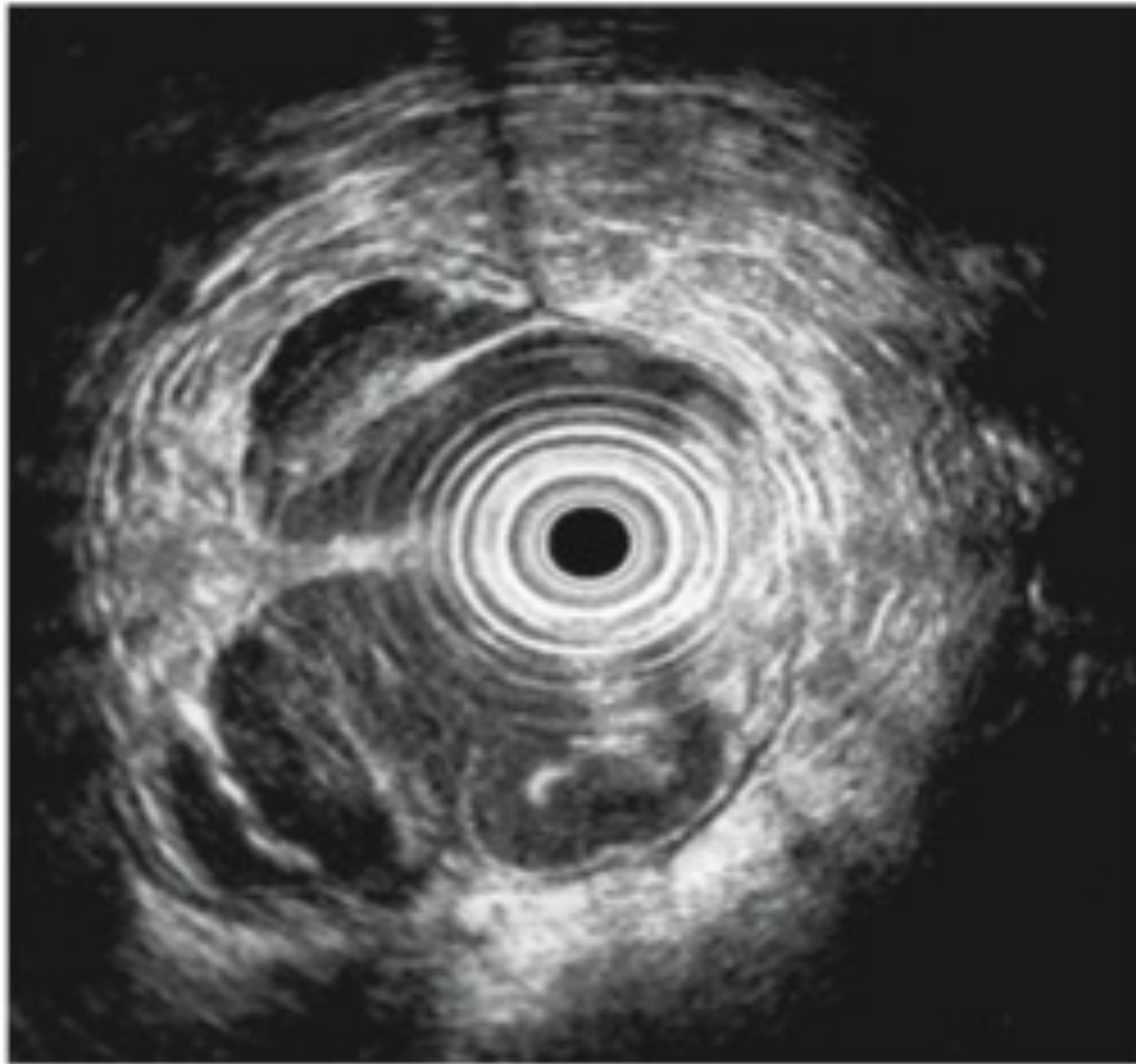
?

LINITE

LINFOMA





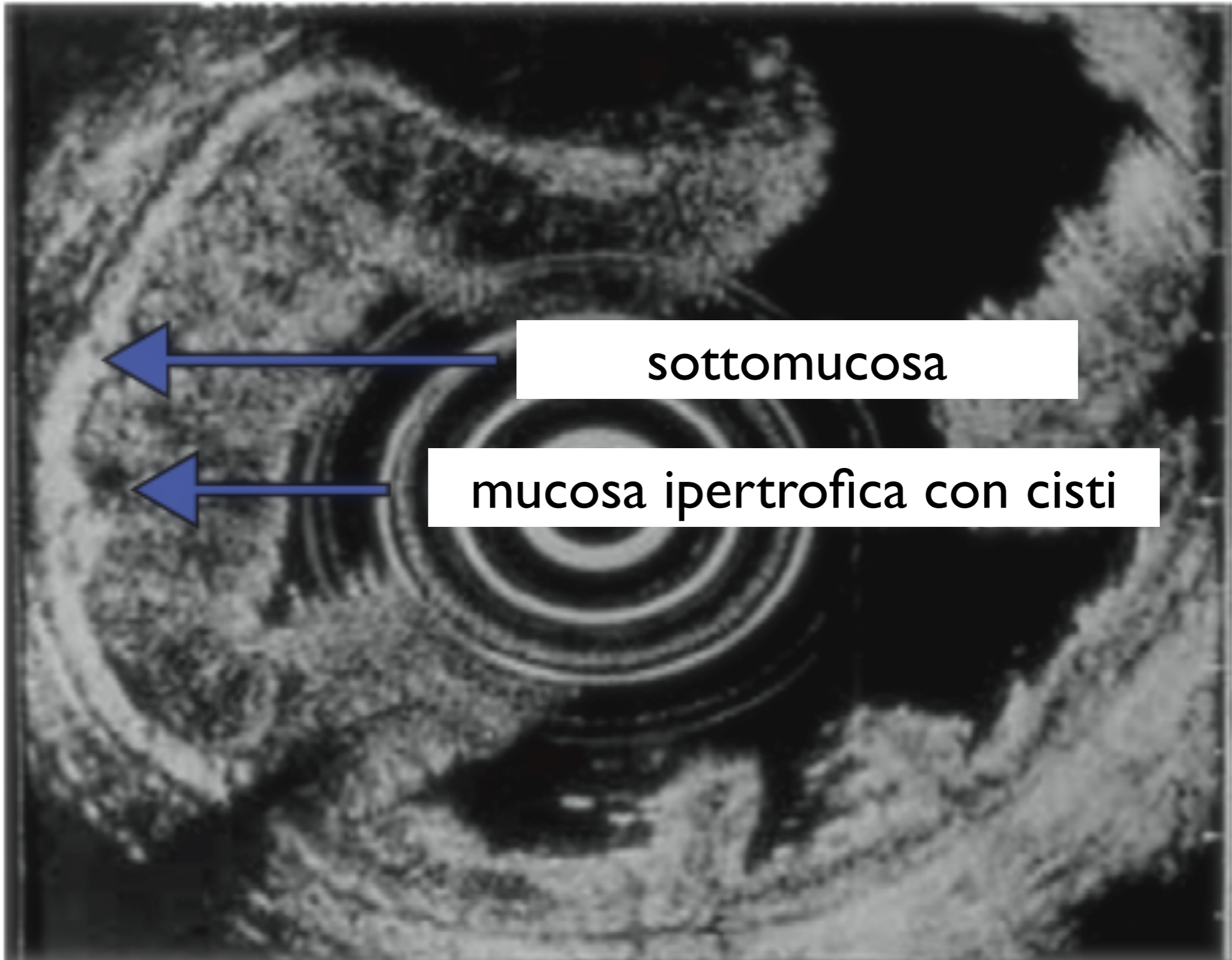


**LINFOMA GASTRICO**



# LINITE PLASTICA

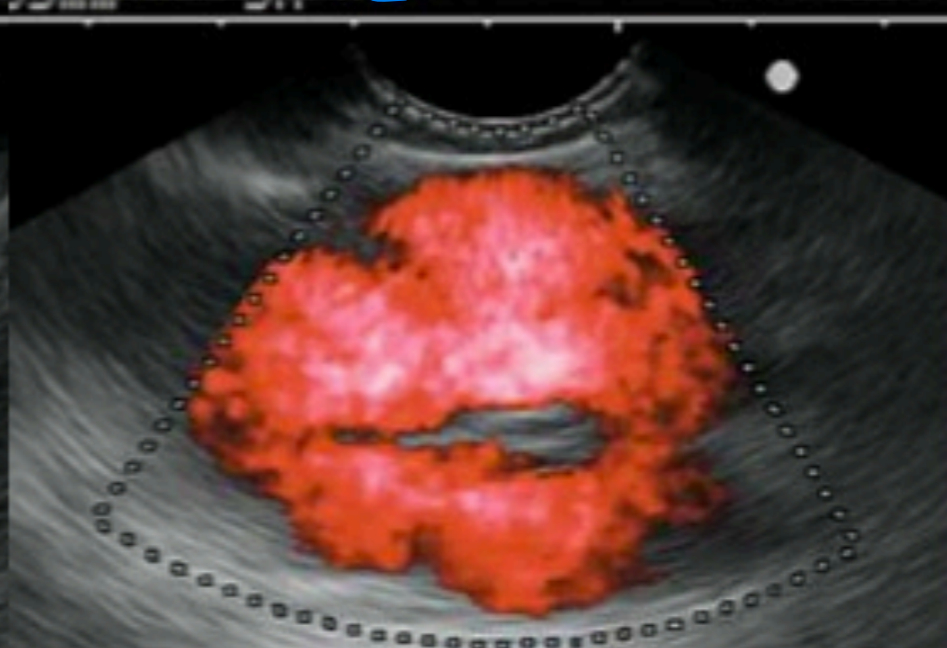
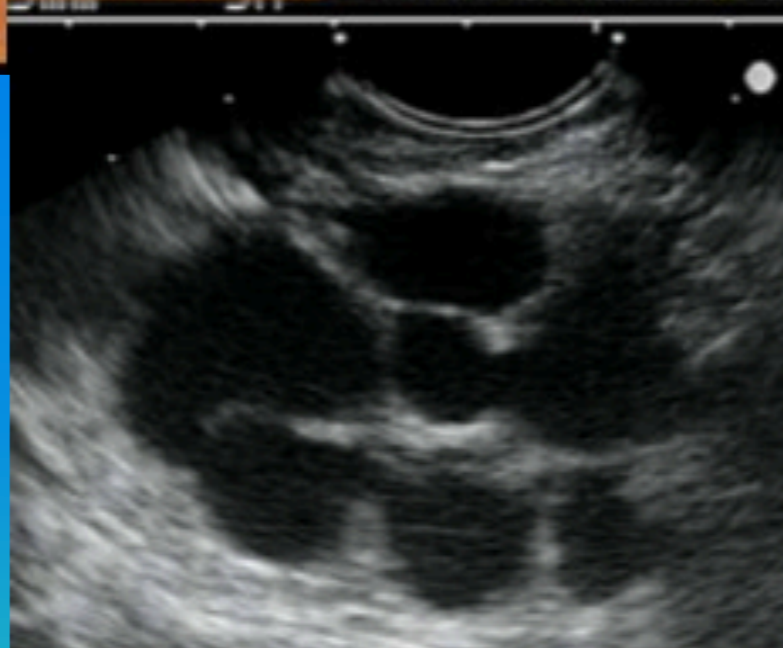
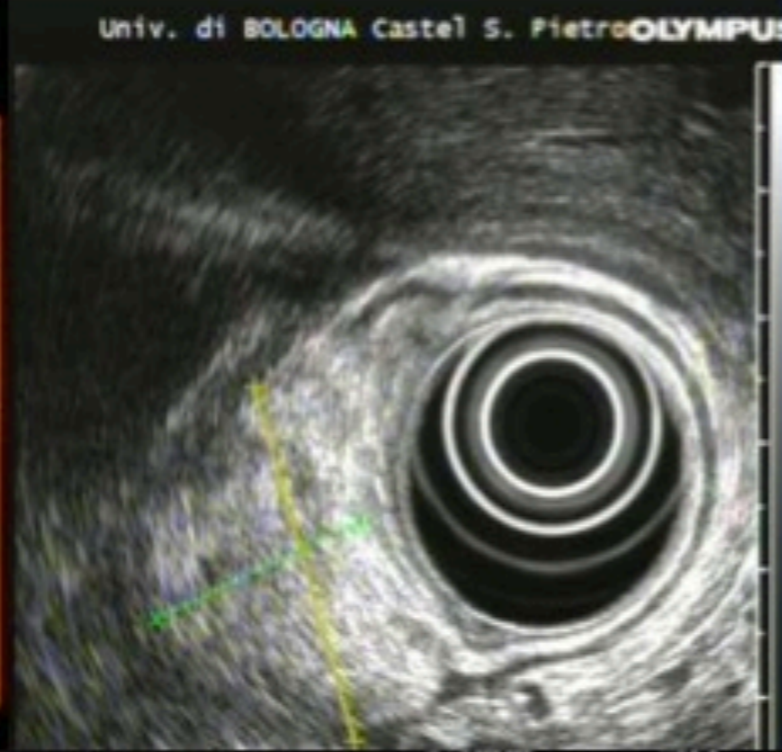
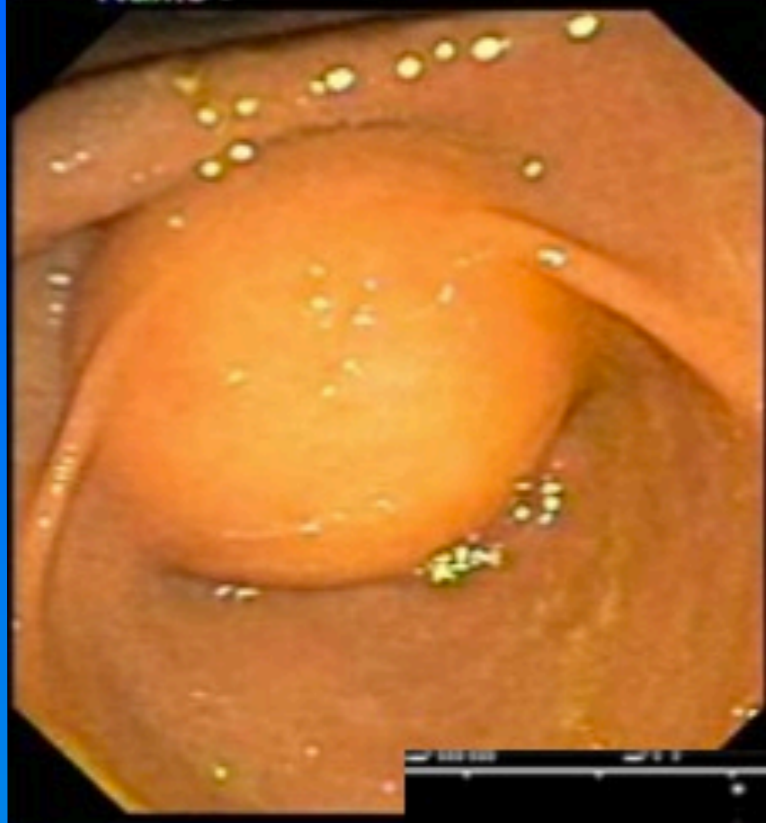




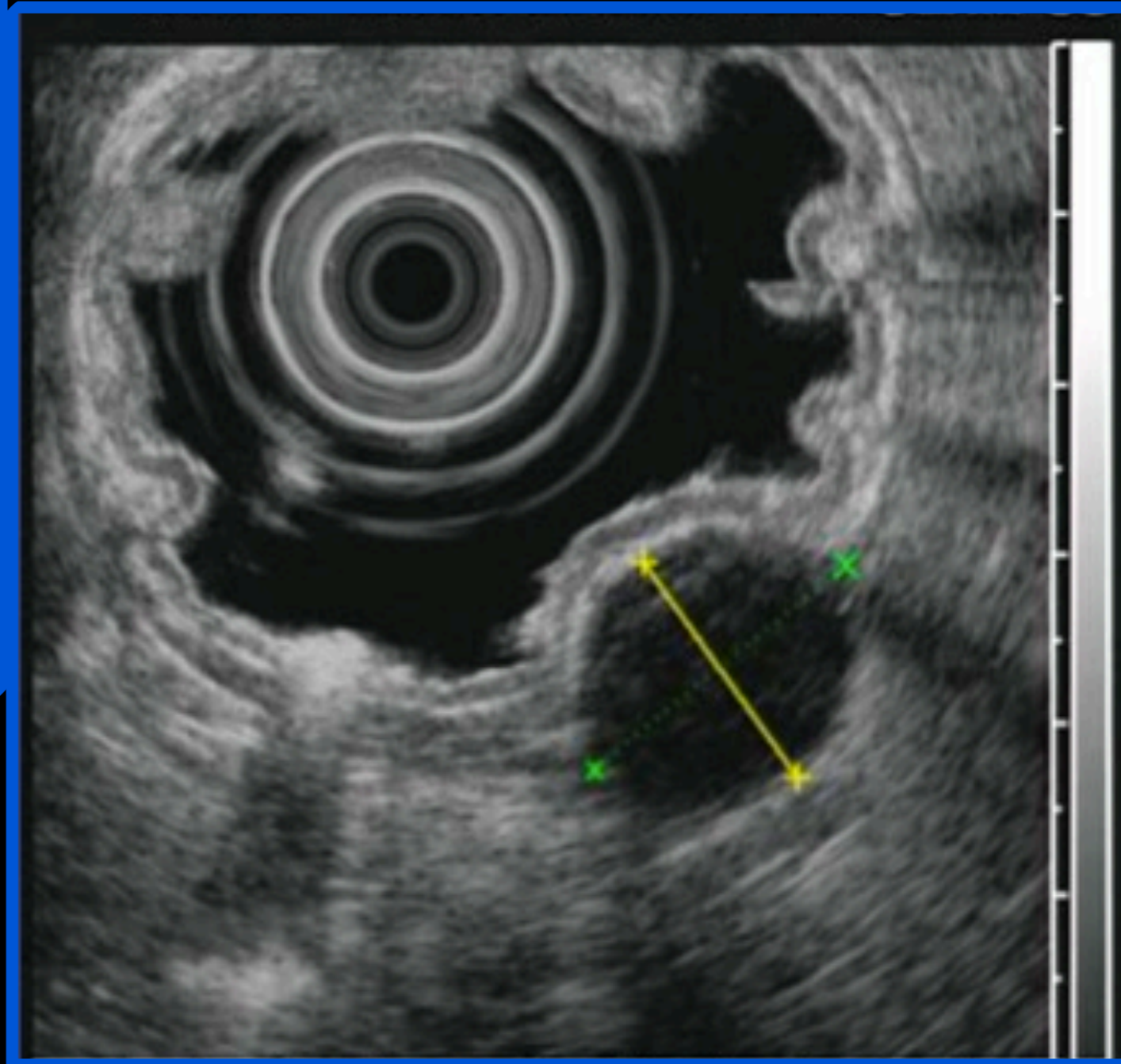
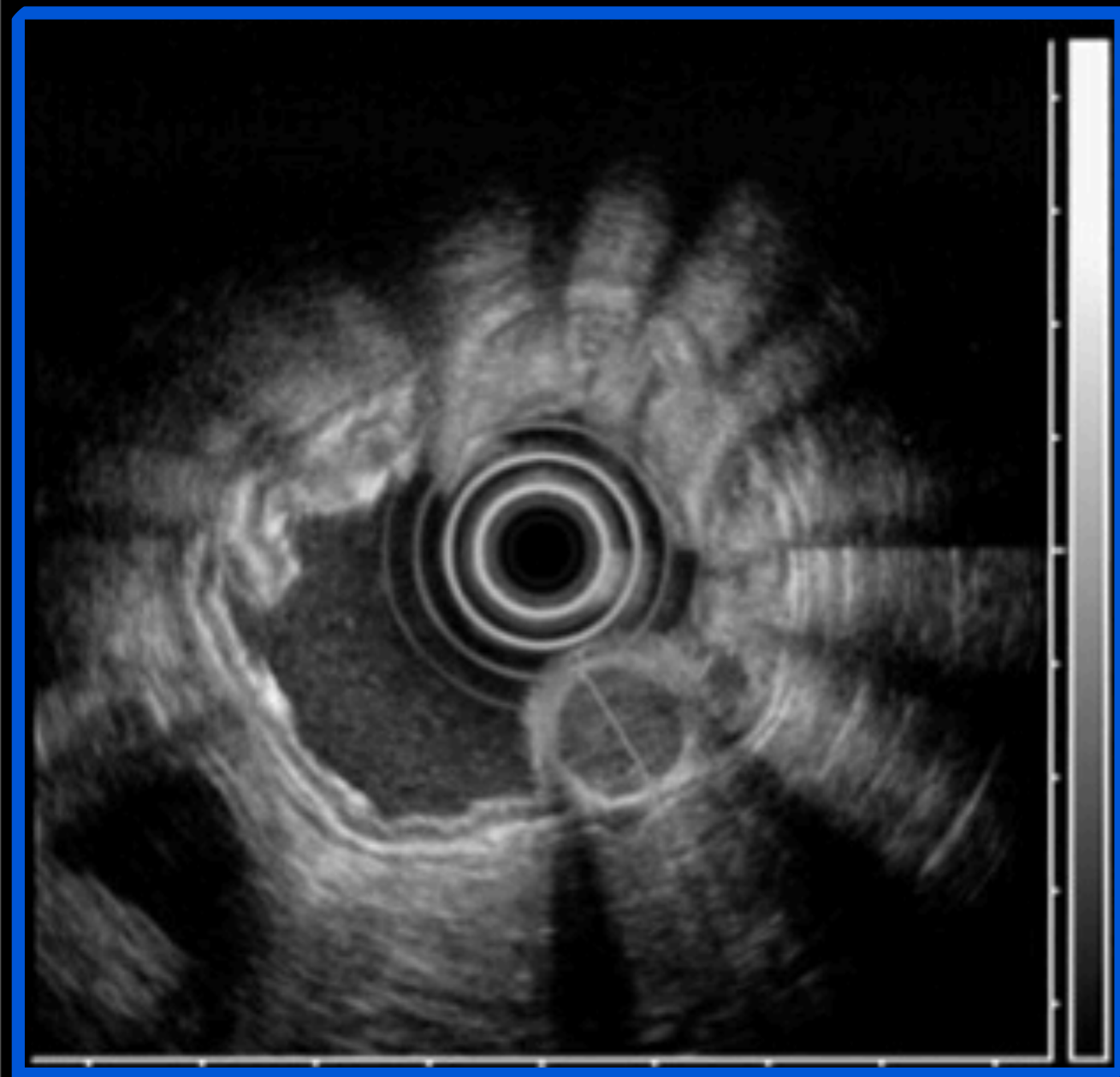
**Ménétriér**



# ...diagnosi differenziale...



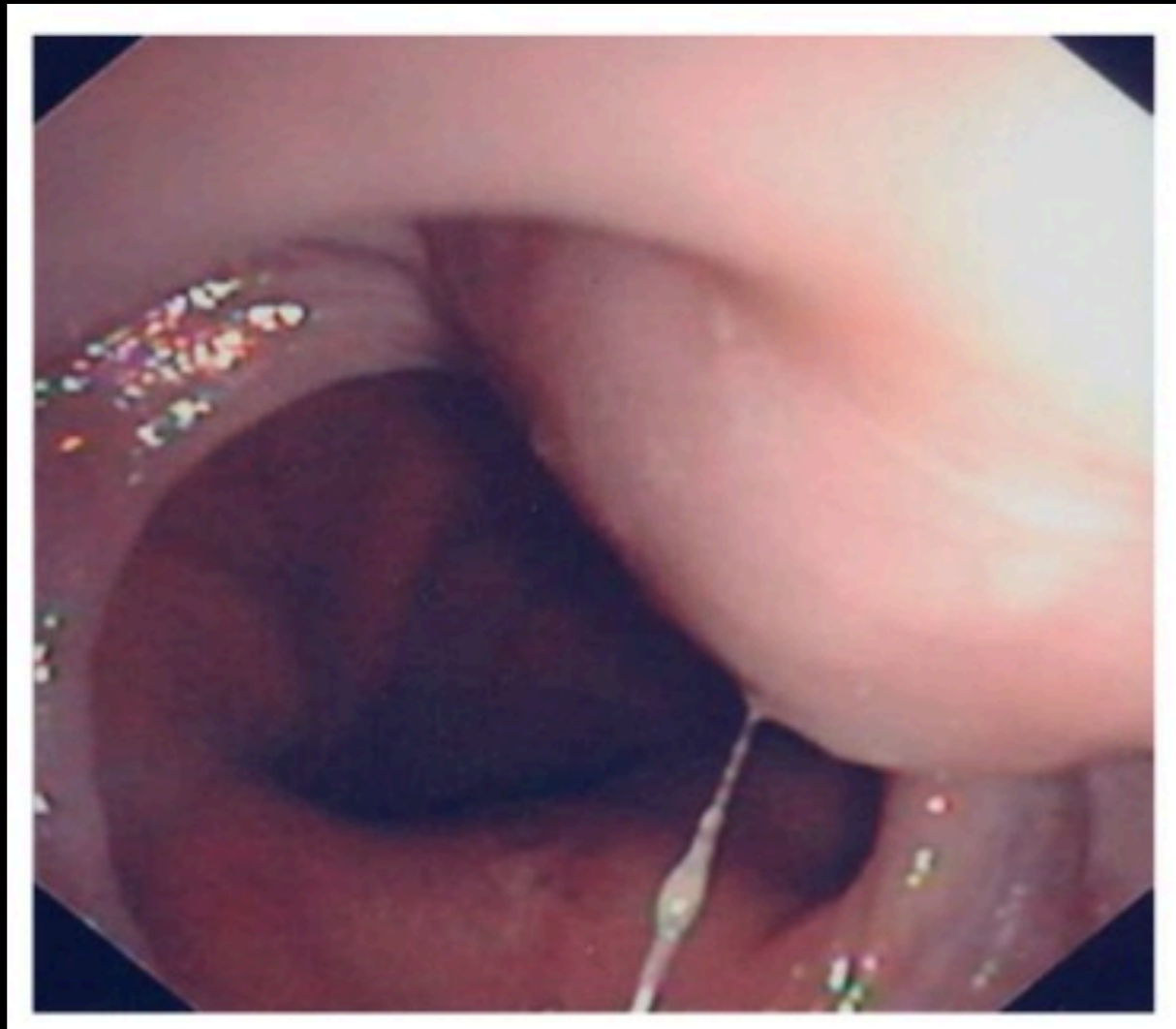




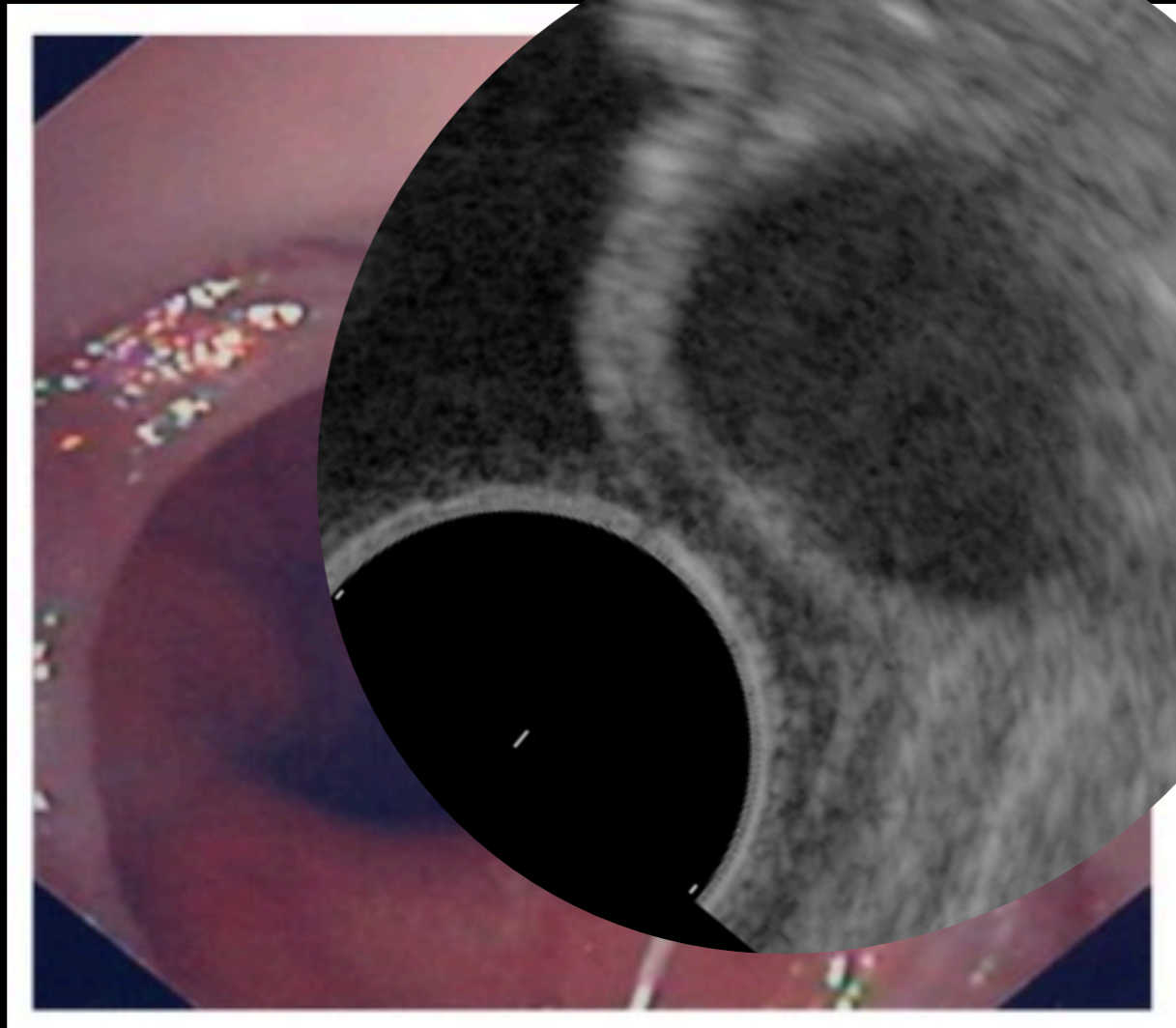


<b>LESIONE</b>	<b>STRATO</b>	<b>CARATTERISTICHE</b>
<b>LEIOMIOMA</b>	mucosa/muscol.	ipoecogeno, tondeggiante, marg. netti
<b>LIPOMA</b>	sottomu.	ecogeno, margini lisci
<b>CISTI</b>	variabile	anecogene ovalari
<b>PANCREAS ABERRANTE</b>	sottom. /muscol,	ipoecogeni, misti, dotti?
<b>VARICI</b>	mucosa/sottom.	anecogene, serpiginose, color
<b>POLIPI</b>	mucosa	ispessimento della mucosa
<b>GIST</b>	muscol.	< 3 cm, ipoecogeno, marg. netti > 3cm, lacune cistiche, margini irregolari
<b>LINFOMI</b>	mucosa/sottom./muscol.	ipoecogeno
<b>CARCINOIDI</b>	mucosa/sottom.	ipoecogeno
<b>SARCOMI</b>	muscol.	ipoecogeno, ecostr.irregolare, margini irreg. invasione tissut.

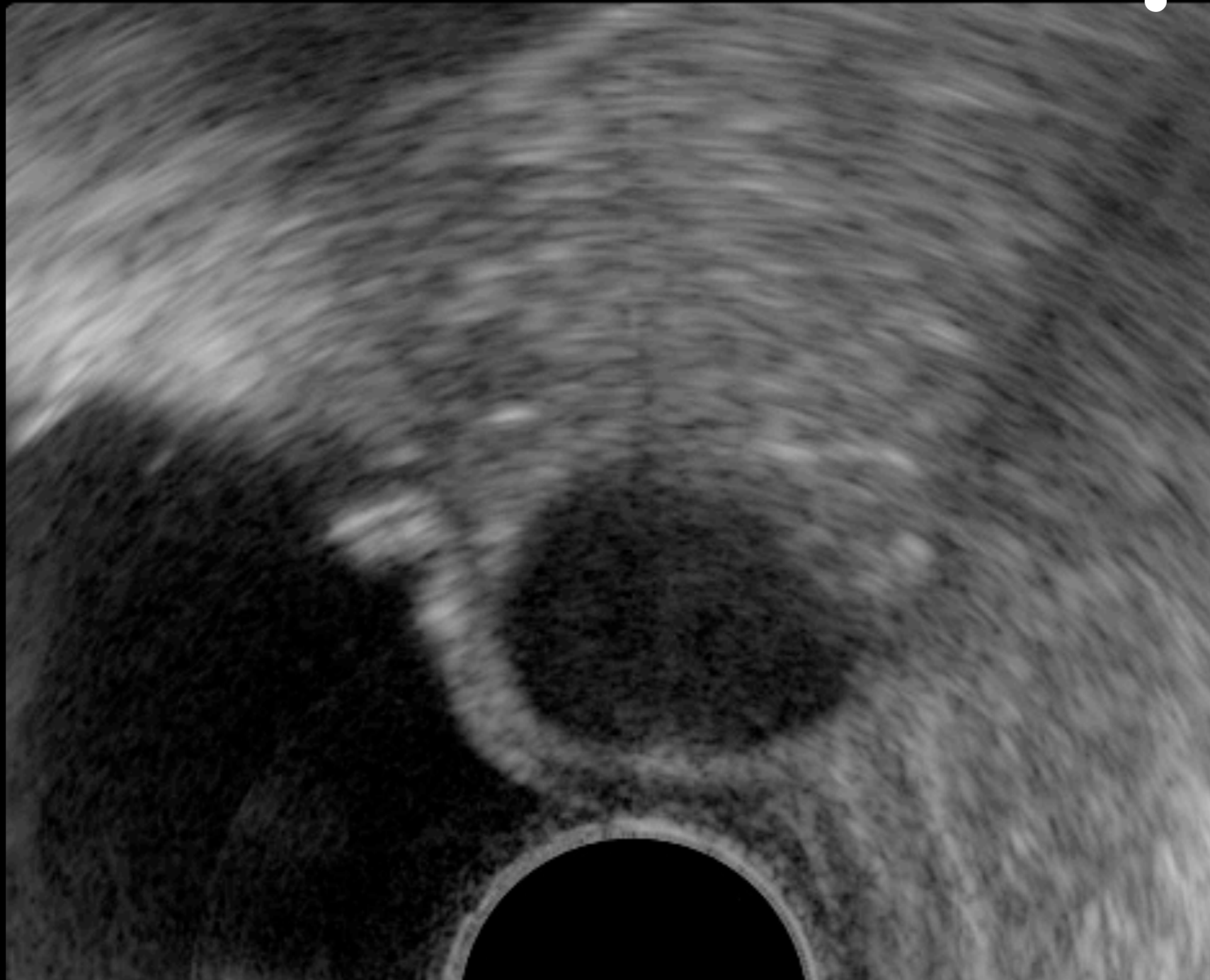
?



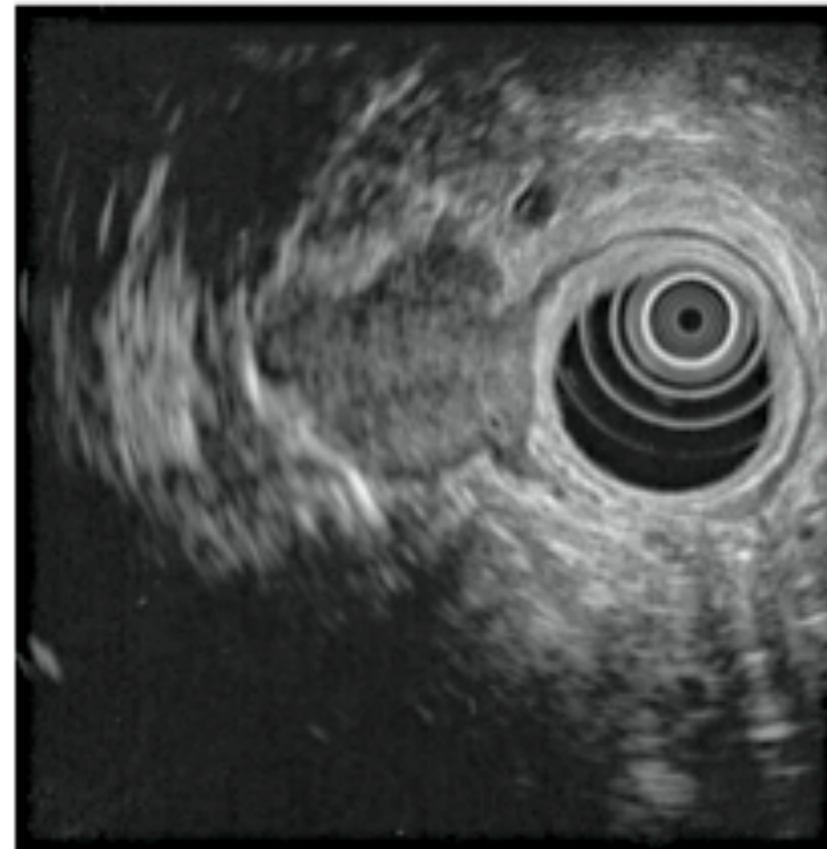
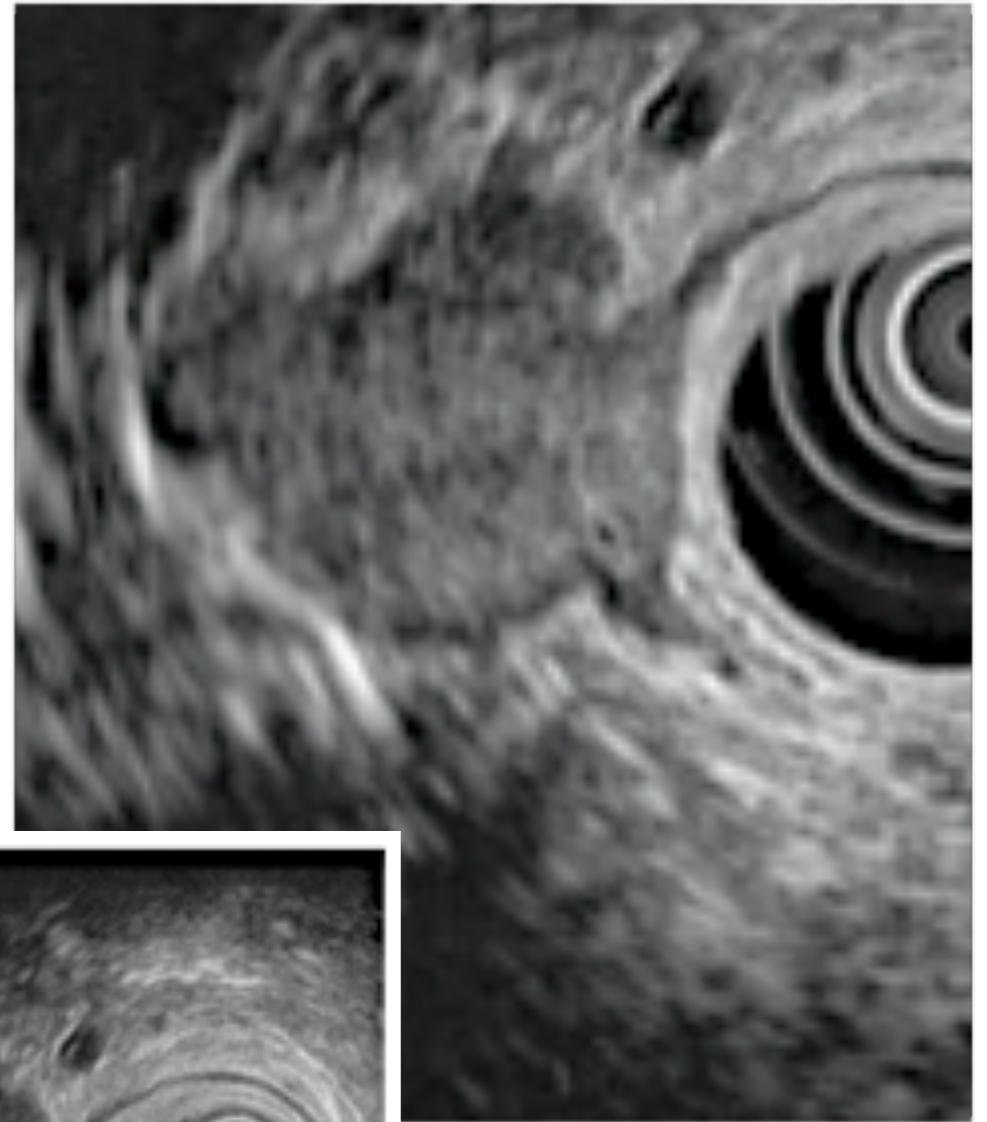
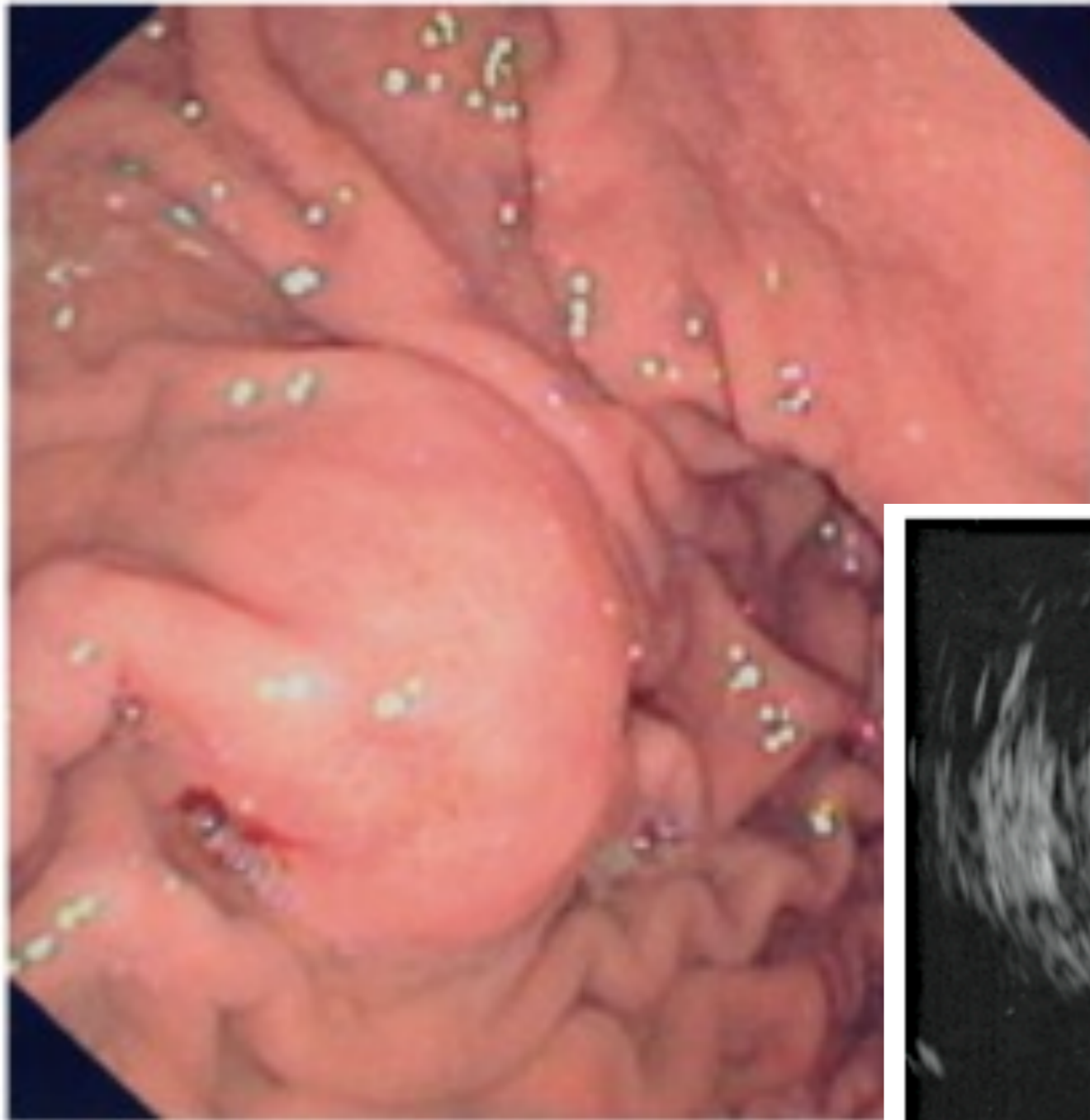
?



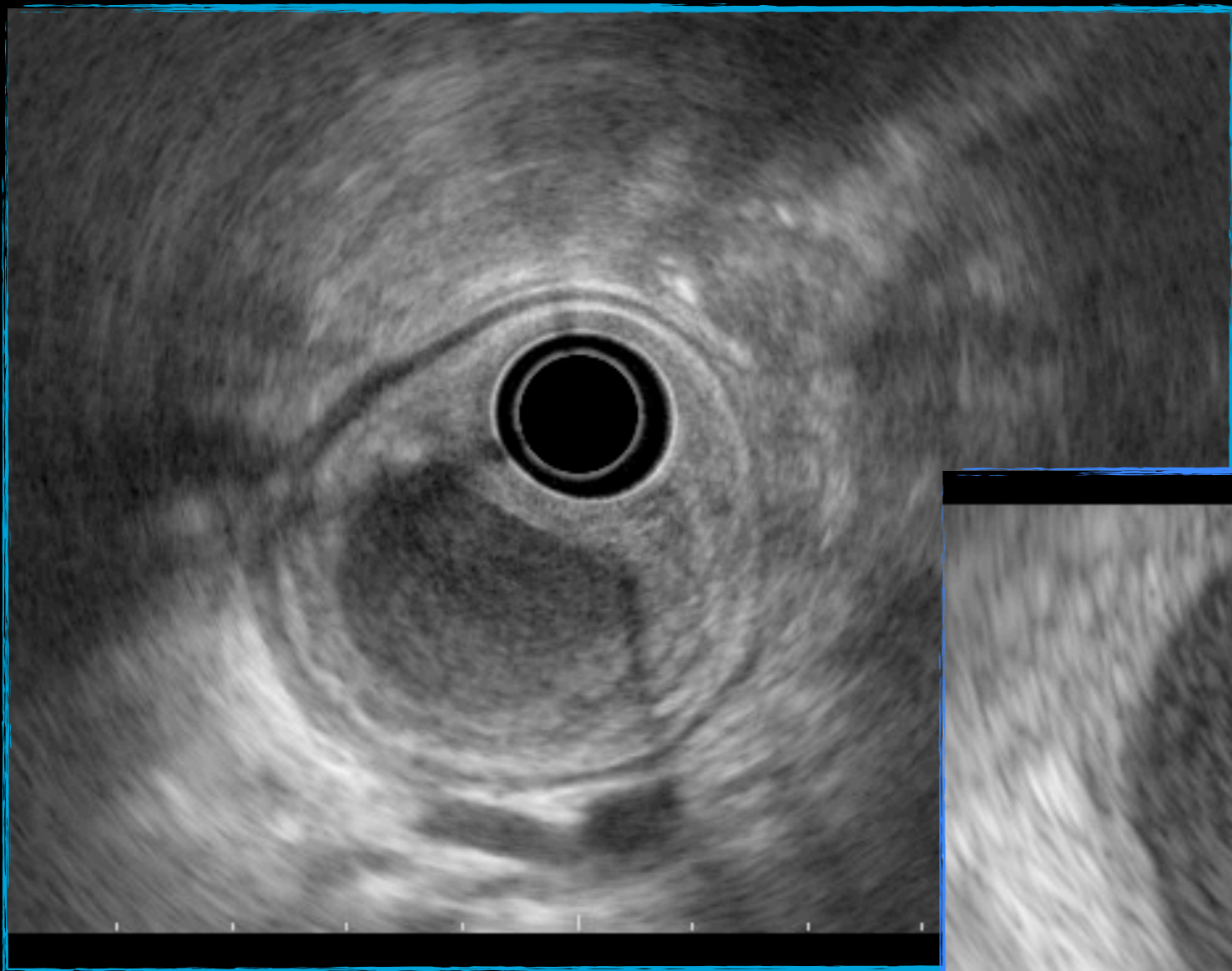




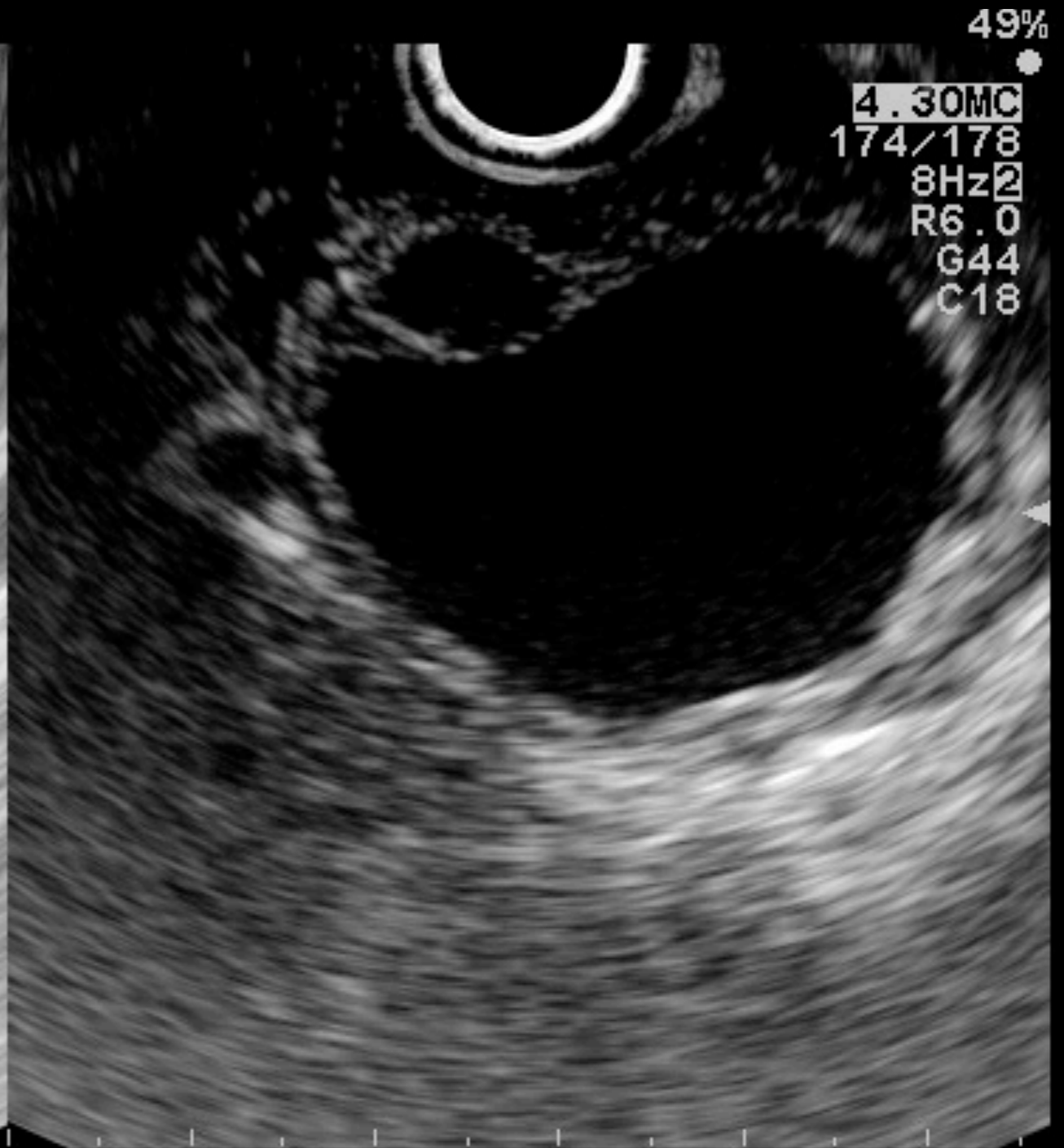
# GIST



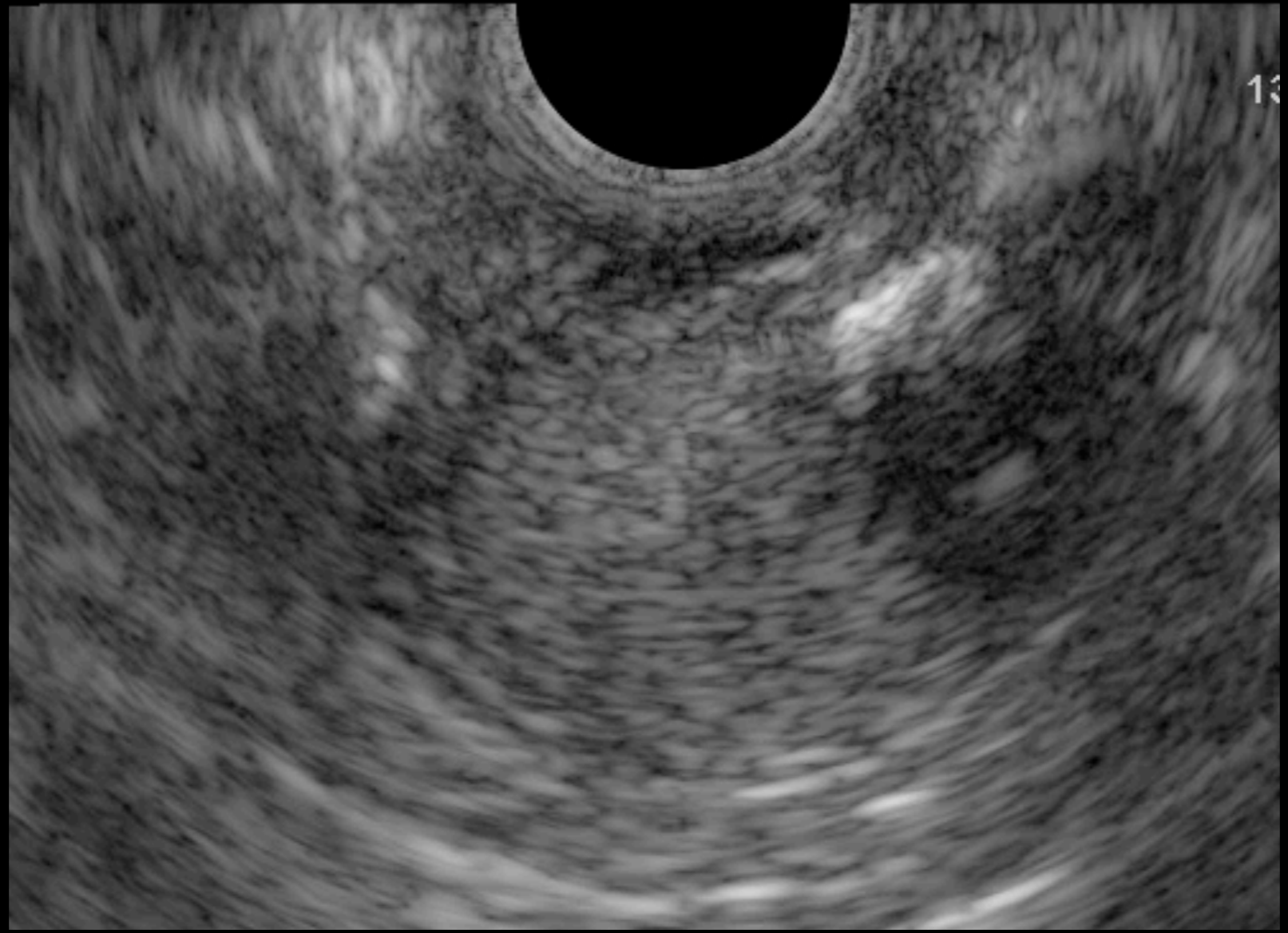




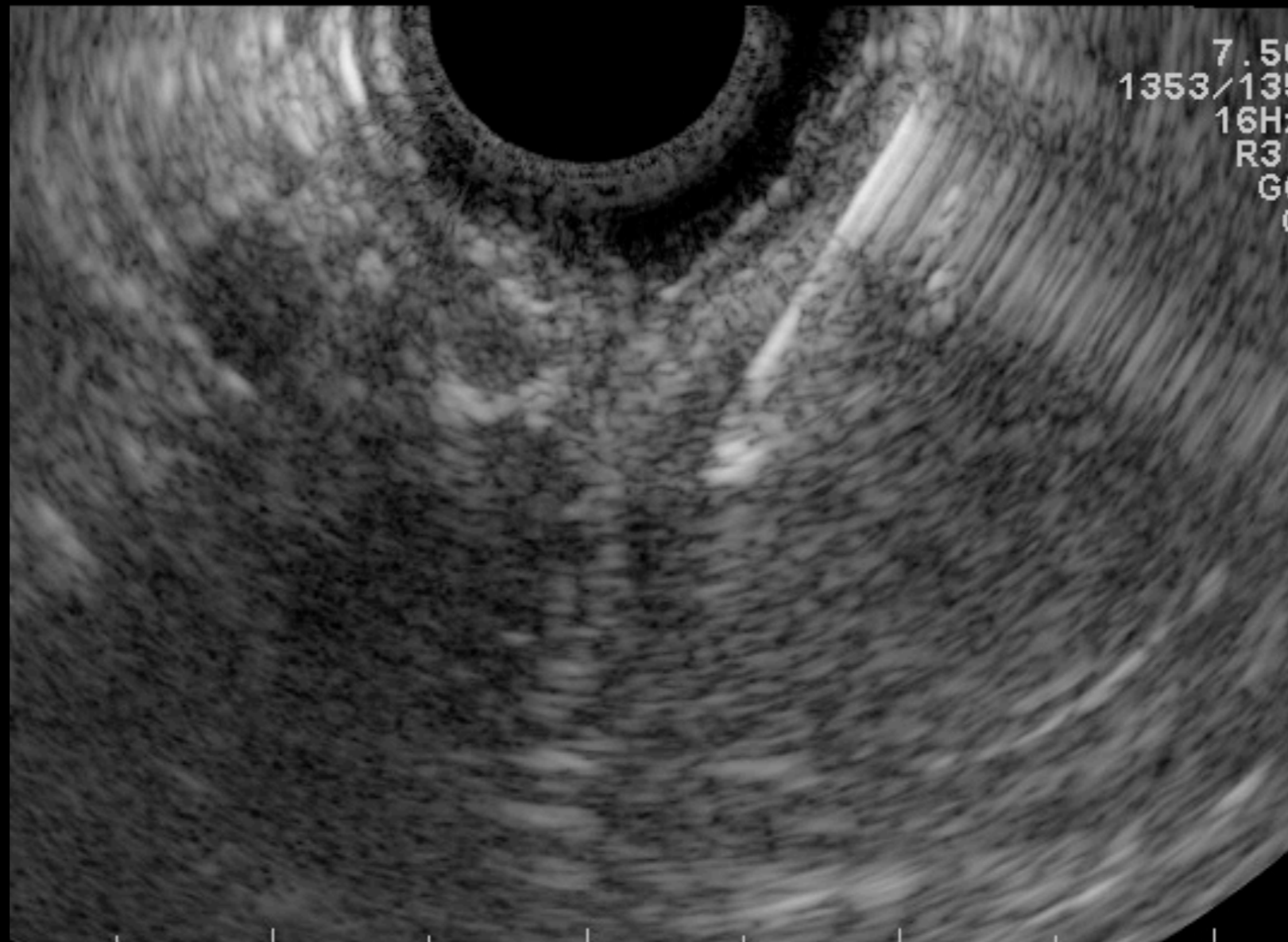




FNA



FNA





FNA

