

Pancreatic melanoma metastasis diagnosed by endoscopic ultrasound-guided SharkCore biopsy



Fig. 1 T1-weighted contrast-enhanced magnetic resonance imaging (MRI) scan showing a 20 × 17-mm mass in the pancreatic tail, which appears to be both isointense and hyperintense (circled).

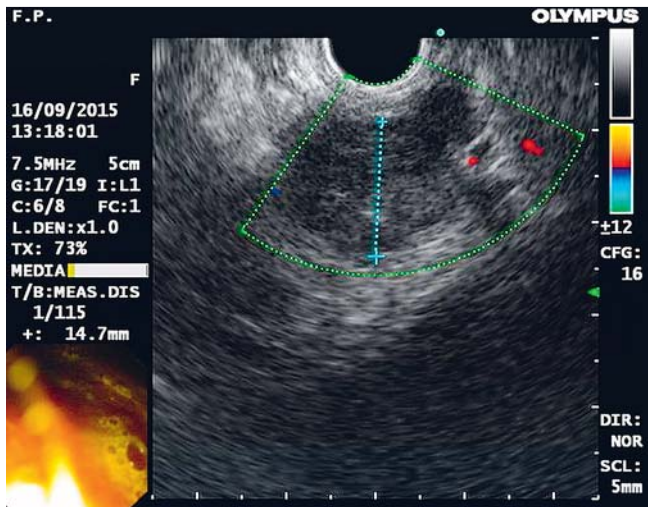
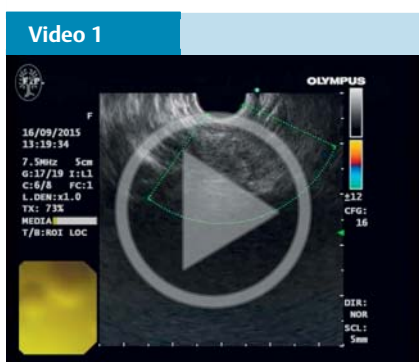


Fig. 2 Endoscopic ultrasound (EUS) image of the pancreas showing a 20-mm round, hypoechoic mass with irregular borders in the tail of the pancreas.



Endoscopic ultrasound (EUS) imaging of the mass in the pancreatic tail and transduodenal fine needle biopsies obtained with the SharkCore biopsy needle.

Metastatic cancers make up fewer than 2% of pancreatic malignancies, and the majority of them mimic a primary adenocarcinoma [1]. Limited data are available concerning the assessment of pancreatic secondary cancers using endoscopic ultrasound-guided fine needle biopsy (EUS-FNB) [2]. In this study we report the first case of metastatic pancreatic melanoma to be diagnosed by combining EUS with biopsy sampling using the SharkCore needle (SharkCore Fine Needle Biopsy System, Covidien Inc, Newton Massachusetts, USA). A 57-year-old woman presented with evidence of a pancreatic mass. Her past medical history included a choroidal melanoma in 2009, which had been treated

by iodine-125 brachytherapy. At the time of treatment no metastatic lesions had been documented.

In May 2015, a magnetic resonance imaging (MRI) scan performed for clinical surveillance demonstrated a nodular liver consistent with metastasis. The patient underwent transarterial chemoembolization with irinotecan. A subsequent MRI scan showed a nodular lesion of the pancreatic tail (20 × 17 mm), which was a mixture of isointense and hyperintense on T1-weighted images (● Fig. 1), and was hypointense on T2-weighted images, compatible with either primary cancer or metastatic disease. The patient was asymptomatic, with no suspicious skin lesions and no palpable lymphadenopathy. Laboratory test results were within normal limits.

The patient was referred to our institution for EUS evaluation. The EUS (Olympus UCT 140 linear array echoendoscope) showed a 2-cm hypoechoic mass in the pancreatic tail (● Fig. 2). Five transduodenal FNB passes (22-gauge SharkCore needle) into the mass resulted in multiple tissue samples (maximum diameter 0.08–0.1 cm) (● Video 1). Histological examination showed malignant pigmented epithelioid lesions, which were immunohistochemically confirmed as metastatic melanoma (● Fig. 3). The patient underwent chemotherapy and has currently completed her induction cycles with fotemustine.

Endoscopy_UCTN_Code_CCL_1AF_2AZ

Competing interests: None

Elena Nadal¹, Patrizia Burra², Claudia Mescoli³, Laura Albertoni³, Cosimo Sperti⁴, Giacomo Carlo Sturniolo¹, Alberto Fantin¹

¹ Gastroenterology Unit, Department of Surgery, Oncology and Gastroenterology, University Hospital of Padua, Padua, Italy

² Multivisceral Transplant Unit, Department of Surgery, Oncology and Gastroenterology, University Hospital of Padua, Padua, Italy

³ Surgical Pathology & Cytopathology Unit, Department of Medicine (DIMED), University Hospital of Padua, Padua, Italy

⁴ 3rd Surgical Clinic, Department of Surgery, Oncology and Gastroenterology, University Hospital of Padua, Padua, Italy

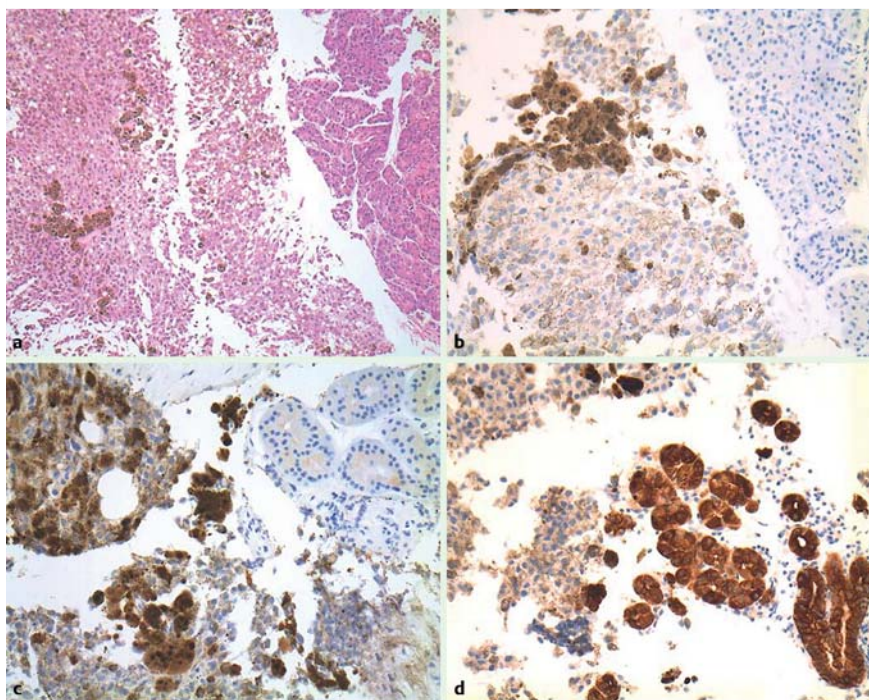


Fig. 3 Histopathology of the pancreatic tissue samples. **a** Hematoxylin and eosin (H&E) staining shows normal pancreatic cells coexisting with a neoplastic (pigmented) cell population (original magnification $\times 10$). **b–d** Immunohistochemical staining shows positivity with: **b** MNF 116 for epithelial cytokeratin (original magnification $\times 20$); **c** S100, a melanocytic marker (original magnification $\times 20$); **d** HMB-45, a melanocytic marker (original magnification $\times 20$).

References

- 1 Sperti C, Moletta L, Patanè G. Metastatic tumors to the pancreas: the role of surgery. *World J Gastrointest Oncol* 2014; 6: 381–392
- 2 Smith AL. Solid tumor metastases to the pancreas diagnosed by FNA: A single-institution experience and review of the literature. *Cancer Cytopathology* 2015; 123: 347–355

Bibliography

DOI <http://dx.doi.org/10.1055/s-0042-109050>
Endoscopy 2016; 48: E208–E209
 © Georg Thieme Verlag KG
 Stuttgart · New York
 ISSN 0013-726X

Corresponding author

Elena Nadal, MD
 Gastroenterology Unit
 Department of Surgery, Oncology
 and Gastroenterology
 University Hospital of Padua
 Via Nicolò Giustiniani, 2
 35128 Padua
 Italy
 Fax: +39-049-8212887
 elena.nadal@hotmail.it